



GAT MONTHLY MEMBERSHIP PROGRESS REPORT

Results as of: 8/31/2022

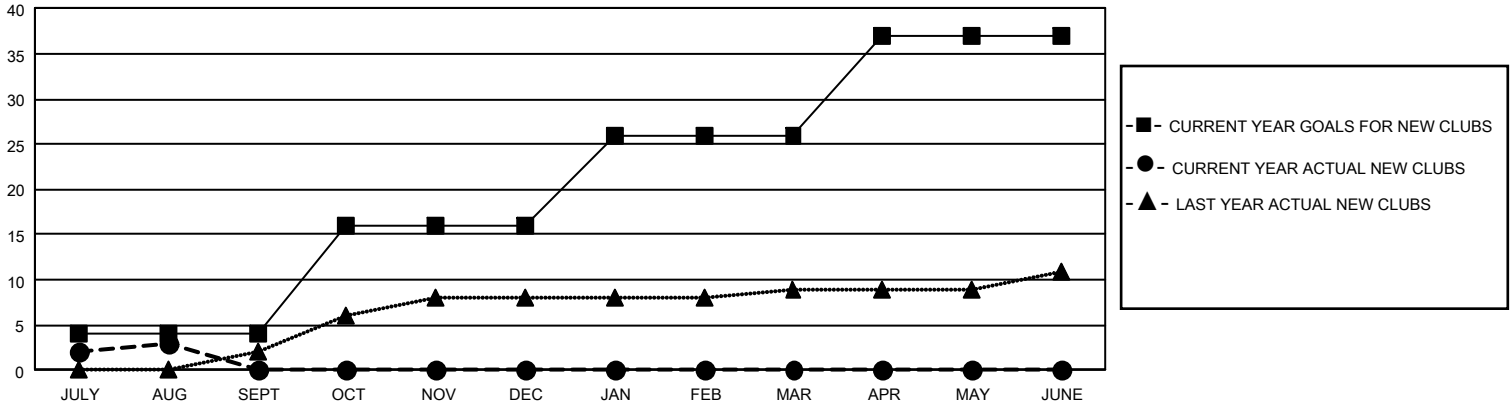
GAT Constitutional Area 2

REPORT DOES NOT INCLUDE CLUBS IN UNDISTRICTED AREAS.

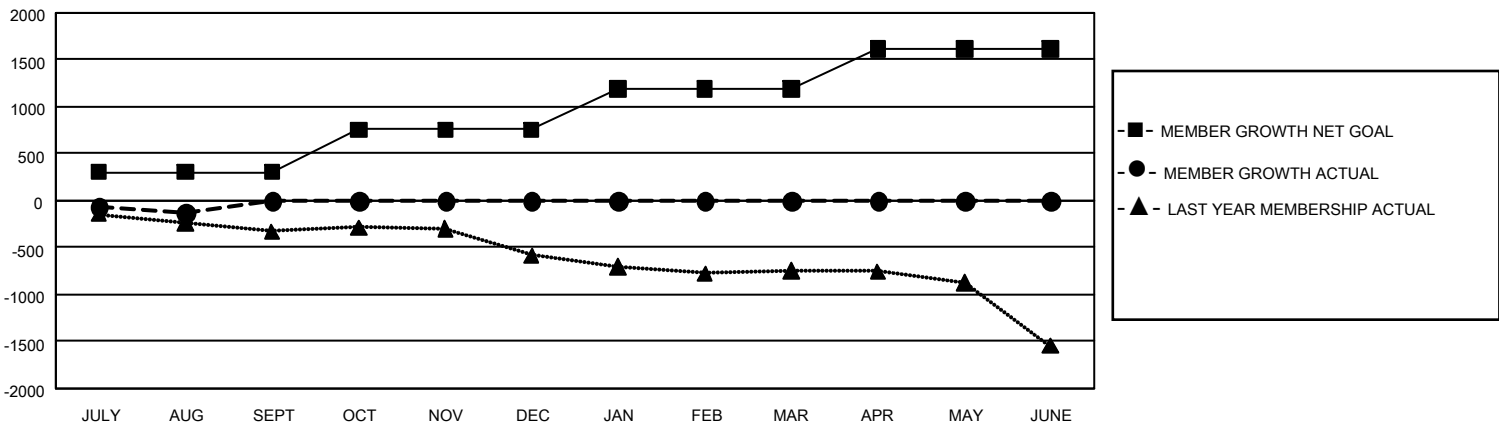
Clubs			
RESULTS FOR 2022-2023			
QUARTER	NEW CLUB GOAL	NEW CLUBS	DROPPED CLUBS
JULY/AUG/SEPT	12	3	5
OCT/NOV/DEC	36	0	0
JAN/FEB/MAR	30	0	0
APR/MAY/JUNE	33	0	0

Members			
RESULTS FOR 2022-2023			
QUARTER	MEMBER GROWTH NET GOAL	MEMBER GROWTH ACTUAL	DROPPED MEMBERS ACTUAL (including transfers)
JULY/AUG/SEPT	306	357	415
OCT/NOV/DEC	450	0	0
JAN/FEB/MAR	438	0	0
APR/MAY/JUNE	426	0	0

GOALS AND ACTUAL NEW CLUBS CUMULATIVE



GOALS AND ACTUAL MEMBERS CUMULATIVE



DROPPED CLUBS: 5	
DROPPED MEMBERS	
DECEASED	55
CLUB CANCELLED	0
OTHER	360
TOTAL	415

99 CLUBS OF 1,251 ADDED 1 OR MORE NEW MEMBERS

[CLICK HERE FOR CUMULATIVE MEMBERSHIP DATA](#)

GENDER DISTRIBUTION	
MALE	17,608 (65.91%)
FEMALE	9,105 (34.08%)
NON BINARY	1 (0.00%)
PREFER NOT TO ANSWER	1 (0.00%)
TOTAL FAMILY UNIT MEMBERS	4,795
FAMILY MEMBERS PAYING HALF DUES	2,461